

**Applied and Environmental Theatre 1st  
Symposium Community Theatre and  
Environmental Pressures in the Coastal  
Communities of the Mediterranean (THEATRE2SEA)  
3-4 June 2024**

**Subject Title: Applied Theatre**

Supervisor:  
Aikaterini Diakoumopoulou

# **TITLE: If i could change the world**

## **PARTICIPANTS:**

- **Karavasili Maria**
- **Murrizi Desara**
- **Sitzaki Anatasia**
- **Chatziemmanouil Maria**

# *Full Plan of environmental theatre*

- Title: If I could change the world
- Reference group: Students
- Central Question: In what way can students contribute to the prevention of environmental pollution
- Common Role: students-activists
- Roles of the Animator: industrialist-worker

- Where: In France in empty square



- When: The first of May

- Who: Students

- What: They demonstrate about the environment

# *Storytelling.*

Once upon a time, in a place, a little bit far away from us, somewhere to France. There was a square full of different trees between them and little animals, like little squirrels and birds, who lived there. Well, in this square, one day of May some students they had gathered to argue for the square that they want to make it industry region.

# **Building space activities**

- First activity:

We ask from the students to make the square with personal subjects(entrance-exit). We define a subject as a tree.

- Second activity:

We giving to them papers, they making passwords, they reading them loudly and they putting them into the square.

# *Building role activities*

- first activity:

We gather in a circle and join hands and starting to make passwords. The next one choose the word that consider more important from the previous sentence and create new password. When someone finish, he/she heat the hand to other student.

- second activity:

We are separating to tree groups and making scets with topic 'what it's possible to happen in student's life'.

After that they getting part of the demonstration.



# Action, 1st point of view

The students enter the square and demonstrate. One of the workers responsible for the creation of the industrial area comes into the square.



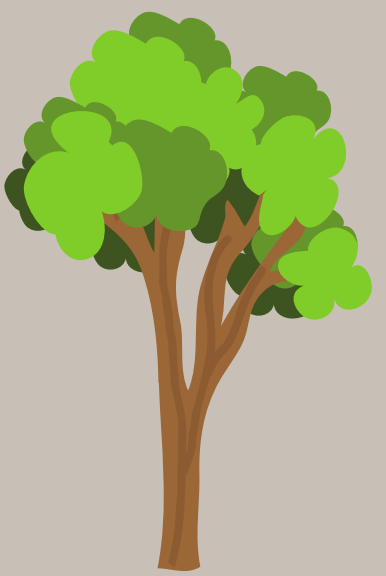
## **Assimilation activity A**

We split into two teams and from each team we choose one player to stand opposite from the others. We give the students cards with objects that are in the square and they try to describe them through charades

# *Assimilation activity B*

## **I am a tree**

We gather in an circle and split into teams of five or six people. Then, we give the following instructions: One of you is the base and represents the tree. Around this, each person from the team builds a story by adding a word. For example, one person says "i am a tree" and represents the tree, someone else says "i am acid rain" and improvises accordingly.



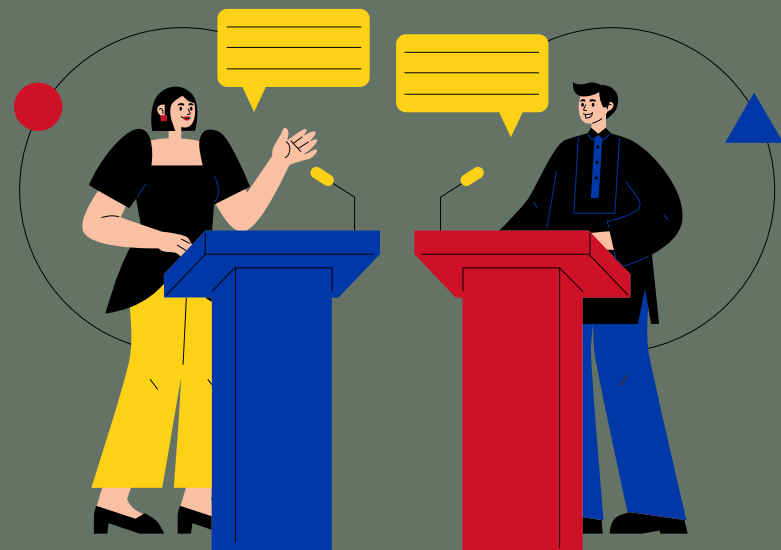
## **Action, 2st point of view**

The students are back in the square and this time the industrialist enters, asking for the reason why the students are demonstrating.

# Assimilation activity A

## The Debate:

The students are split into two teams. They have two minutes to find as many reasons as possible to support their position, either for or against the issue, and to discuss them.



# *Assimilation activity B*

## Forum Theatre

Outside the square, the worker from perspective A and the industrialist from perspective B meet, and the dialogue begins.

## **Action - announcement of decision**

The students enter the square and decide whether or not to back down. The industrialist comes in, and they announce their decision to him.

# *Reflection*

After 20 years, a sculpture is created in the square in memory of the demonstration.



# **Needed Materials**

1. Papers,
2. Pencils,
3. Markers,
4. Cardboards,
5. Construction Helmet
6. Tie

***THANK YOU FOR YOUR TIME!!***