



# Athens: A Living Museum Awaits Us

*Eight themes, eight narratives, one city:  
The history of education comes alive in the streets of Athens!*

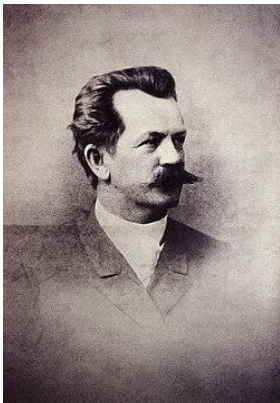
Dear Delegates,

The ISCHE Athens 47 Conference, titled “Sources and Research Practices in the History of Education: Challenges and Perspectives”, is approaching and Athens is ready to welcome the international scholarly community.

The history of education is not confined to archives; it breathes in the city’s streets, echoes in its buildings, and lives in its memories. We invite you on a unique journey through eight urban stations, each reflecting a thematic strand of our Conference. At every stop, a Historical Riddle awaits to challenge your research instincts and reveal a hidden layer of the city’s educational past.

## An Itinerary of Eight Stations | The Thematic Strands of our Conference

### 1 Station 1 | Theme 1 Historiographical traditions and new methodological and interpretive pathways



**Historical Riddle**  
*Which German architect, who designed some of the most iconic educational landmarks in Athens, believed that architecture itself functions as a "source" that instructs citizens on their history?*

**The Clue Solved**  
**Ernst Ziller** (1837–1923)! By designing institutions such as the National Library, the Presidential Mansion, and the National Archaeological Museum, he created "visual narratives" for the Greek state.

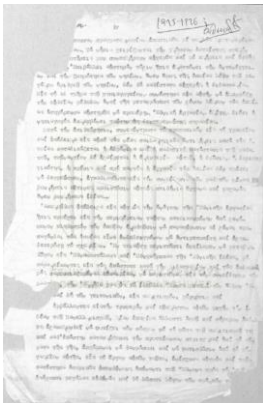
In Theme 1, we examine how established historiographical traditions are challenged and how alternative source materials, such as architectural blueprints, reconfigure the historian’s relationship with the past.

**Field Walk Tip** A stroll down Panepistimiou Street (officially Eleftheriou Venizelou Avenue) is recommended!

## 2

### Station 2 | Theme 2

## Public and private archives, libraries and collections: perspectives, problems and challenges



### Historical Riddle

Which imposing architectural landmark in Athens, formerly a prison, currently houses the primary sources of Greek educational history and state administration?



### The Clue Solved

The **General State Archives**! This facility, the former Averof prisons, preserves millions of records, ranging from teacher appointments to historical school textbooks.

In Theme 2, we investigate how access to these archival repositories forms the bedrock of historical inquiry while raising critical questions about archive politics and historical meaning-making.



**Field Walk Tip** Their main archival repository in Psychiko is well worth a visit.

## 3

### Station 3 | Theme 3

## Studying educational systems and policies



### Historical Riddle

Which iconic neoclassical landmark in central Athens, now housing the Council of State, operated during the 19th century as the first Higher Girls' School (*Parthenagogio* in Greek)?



### The Clue Solved

The **Arsakeio Normal School**! Founded in 1836 by the *Philekpaideftiki Etairia* and designed by Lysandros Kaftantzoglou, it served as Greece's first Higher Girls' School (*Parthenagogio*), training female teachers in the decades following independence. Its neoclassical facade on Panepistimiou Street—today home to the Council of State—embodies the entanglement of state-building, philanthropy, and gendered educational policy in modern Greece.



In Theme 3, we analyse how administrative records, state budgets, and official reports shape educational governance, structural reforms, and statecraft over time.



**Field Walk Tip** Walk past the intersection of Panepistimiou and Pesmatzoglou Streets!

## 4

### Station 4 | Theme 4

## Traces of everyday life and of the sensorial in educational processes



#### Historical Riddle

Which material object, once the "fear and terror" of pupils, now serves as a valuable sensory source for deciphering historical disciplinary regimes?



#### The Clue Solved

The **wooden rod** (or ruler)! Through material culture, such as rods, school uniforms, or blackboards, we reconstruct the "embodied" experience of schooling, along with the rituals and taboos of the historical classroom.

In Theme 4, we examine how the sound of the rod on the desk or the texture of the stiff uniform act as material traces that elucidate the social habitus and unwritten rules of schooling.



**Field Walk Tip** The Museum of School Life and Education in Plaka (Tripodon Street) awaits your visit!

## 5

### Station 5 | Theme 5

## Studying pedagogical theories and agents



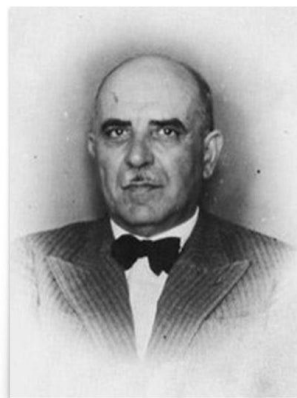
#### Historical Riddle

Which prominent Greek intellectual saw his radical ideas on vernacular language reform politically persecuted as he framed the future of the nation's schooling?



#### The Clue Solved

**Dimitris Glinos** (1882-1943)! A towering figure of the Educational Demotic Movement, Glinos co-founded the *Ekpaideftikos Omilos* (1910) alongside Delmouzos and Triantafyllidis, arguing that replacing *katharevousa* with the vernacular *dimotiki* in schools was not merely a linguistic question but a profoundly political one. Through the journal *Anagennisi*, he linked pedagogical reform to social emancipation — and paid the price, facing repeated persecution and exile for his convictions.



In Theme 5, we examine how pedagogical treatises, intellectual networks, and the ideological conflicts of historical agents illuminate the development and circulation of educational thought. This perspective also prepares us to connect different spheres of source material.



**Field Walk Tip** Visit the Glinos Foundation in Athens to examine its original manuscripts. It is located in the family's heritage residence, built in 1928 and designated as a historical monument by the Ministry of Culture in Ano Patisia.

# 6

## Station 6 | Theme 6 Working across spheres and sources



### Historical Riddle

How can we methodologically connect the official educational policies of the 1920s with the everyday lived experiences of students in the refugee settlements of Athens?



### The Clue Solved

**By cross-examining disparate historical sources!** While official decrees delineated an idealised system, photographs and oral testimonies from Pagrati or Kaisariani reveal classrooms operating in tents or makeshift shacks.



In Theme 6, we address precisely this: the methodological challenges of conducting research across different spheres of the educational field.



**Field Walk Tip** Plan a visit to the Museum of Refugee Hellenism (Agia Sofia / Nea Filadelfeia transit station).

# 7

## Station 7 | Theme 7 Digital sources, sources' databases, and use of Artificial Intelligence in historical research



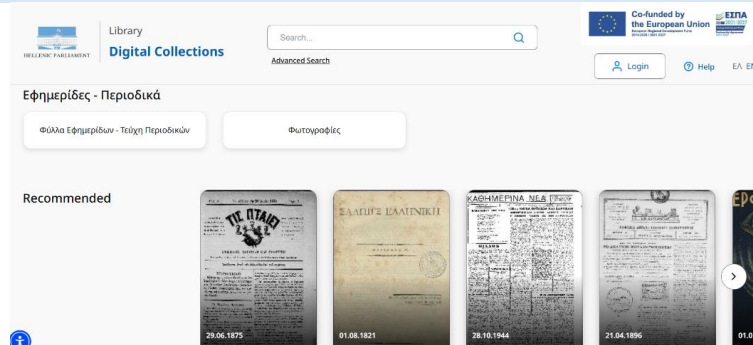
### Historical Riddle

Which major digital repository in Athens enables data-driven keyword queries for the term "school" across thousands of historical newspaper pages dating back to 1850 in seconds?



### The Clue Solved

The **Digital Library of the Hellenic Parliament!** Thanks to OCR and AI technologies, historical research practices are being reshaped.



In Theme 7, while data-driven approaches and AI tools offer unprecedented accessibility, they also raise critical epistemological questions: How "objective" is an algorithm when confronting historical bias embedded in archives? This question brings us to memory and representation.



**Field Walk Tip** Stroll around the Hellenic Parliament Mansion at Syntagma Square, where traditional classical architecture intersects with the digital humanities!

# 8

## Station 8 | Theme 8

### Memories, memory-work, and social representations of education as sources



#### Historical Riddle

Which historic Normal School (*Didaskaleio* in Greek) became a focal point for the demoticism reform and the intense ideological clashes of the "Marasleika" incident in 1925?



#### The Clue Solved

The **Marasleio Normal School!** Analysed through ego-documents, autobiographies, and oral histories, this institution stands as a living site of memory, proving that school spaces possess their own historical voice.



In Theme 8, we explore how collective memory, oral histories, and social representations construct and reframe narratives about the educational past.

5



**Field Walk Tip** Make a stop outside the historic Marasleio campus in Kolonaki!

## The Vision of Our Conference

By offering eight distinct frameworks on the past, ISCHE 47 aims to break new ground in historical inquiry and underscore the pivotal role of empirical sources, material culture, and digital technologies in conceptualising education.

*Athens is not merely the backdrop of our conference — it actively shapes it, inviting us to decode its riddles.*

We look forward to welcoming you in person, exchanging scholarly perspectives, and solving these historical riddles as we walk these paths together.

**The ISCHE 47 Local Organising Committee**